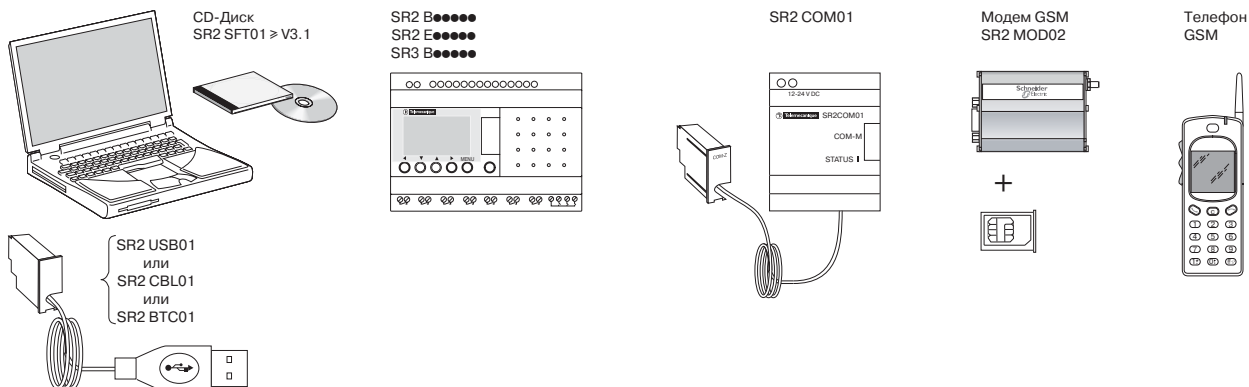


SR2 COM01 Краткое руководство

Назначение: Отправка аварийных сообщений на Ваш мобильный телефон при помощи SR2-COM01.

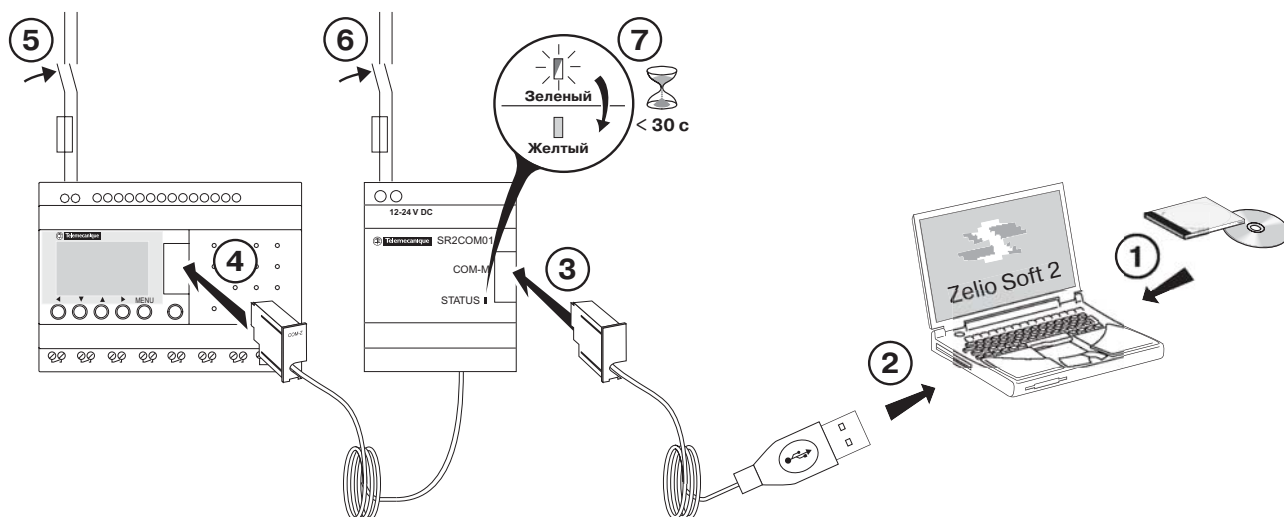
A

Необходимое оборудование




B

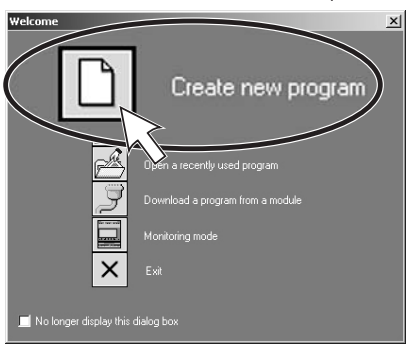
Подключение оборудования для программирования и передачи сообщений

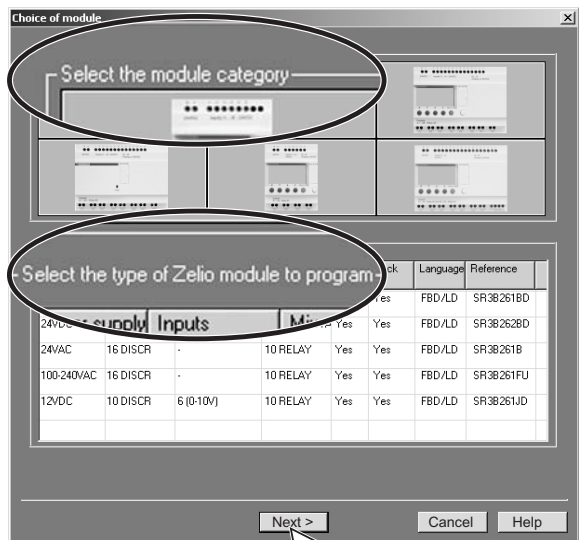


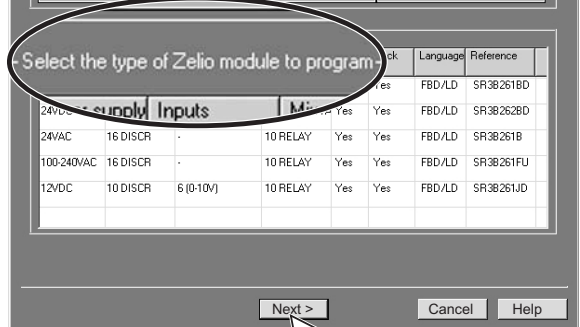
Программирование и передача сообщений


C

1  **2 x Клик!**

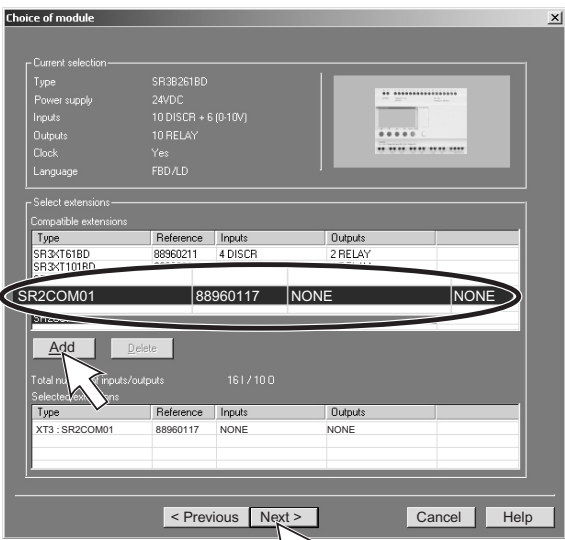
2  Create new program


3  Select the module category


4  Select the type of Zelio module to program

5 

Type	Power supply	Inputs	Outputs	Clock	Language	Reference	
24VDC	24VDC	10 DISCR + 6 (0-10V)	10 RELAY	Yes	FBD/LD	SR3B261BD	
24VAC	24VAC	16 DISCR	10 RELAY	Yes	FBD/LD	SR3B262BD	
100-240VAC	100-240VAC	16 DISCR	10 RELAY	Yes	FBD/LD	SR3B261B	
12VDC	12VDC	10 DISCR	6 (0-10V)	10 RELAY	Yes	FBD/LD	SR3B261JD

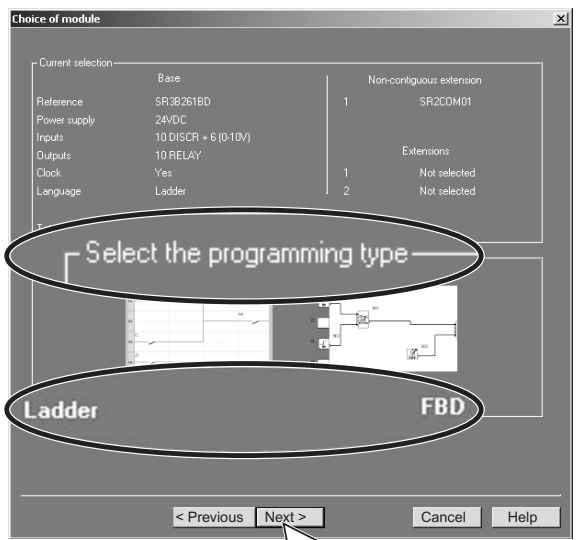
6  **SR2COM01**


7 

8 

Type	Reference	Inputs	Outputs
SR3KT61BD	88960211	4 DISCR	2 RELAY
SR3KT101BD			
SR2COM01	88960117	NONE	NONE

Type	Reference	Inputs	Outputs
XT3 : SR2COM01	88960117	NONE	NONE

9  Select the programming type

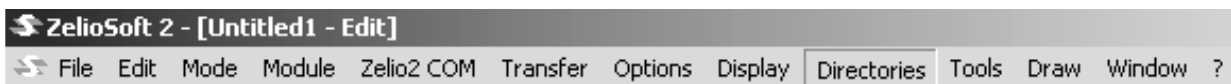
10  **Ladder** **FBD**

Reference	Base	Non-contiguous extension
SR3B261BD	1	SR2COM01

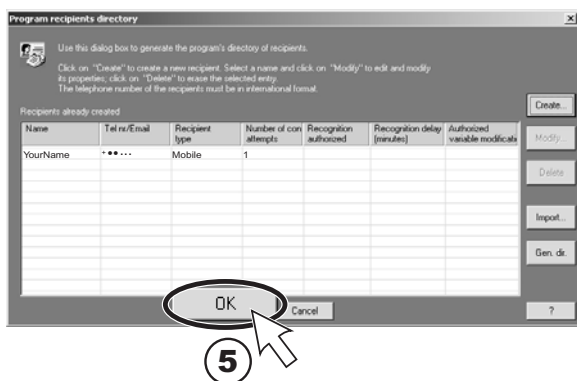
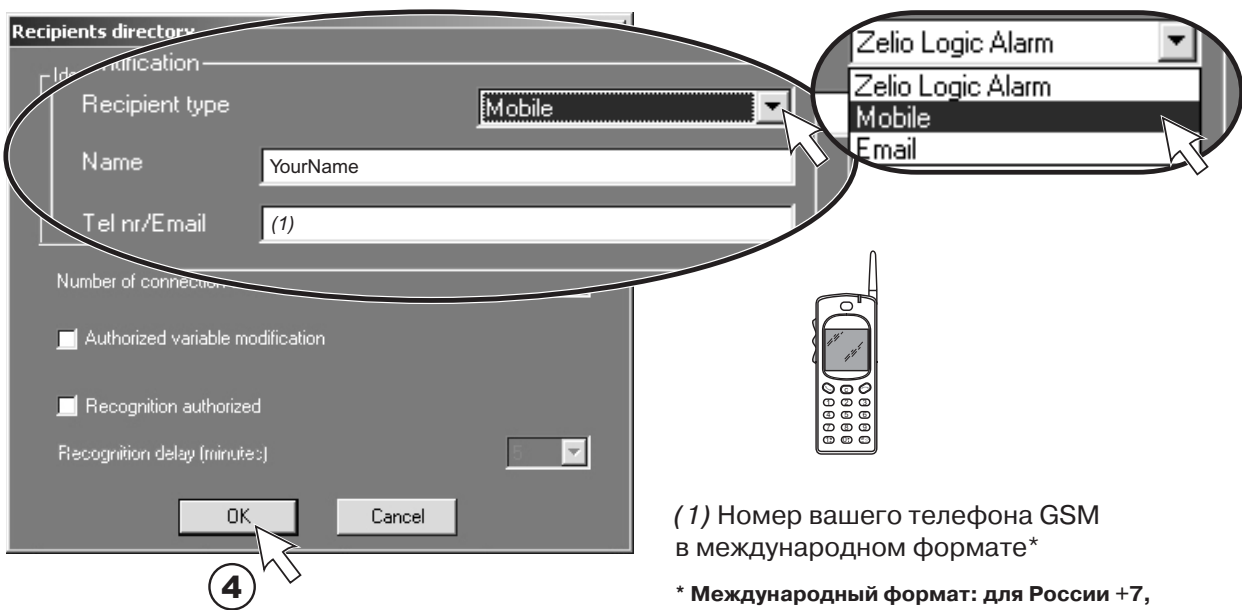
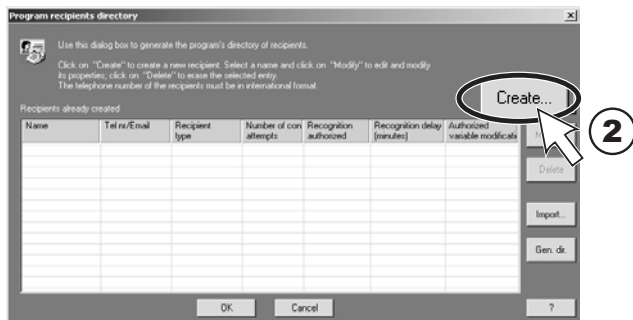
Reference	Power supply	Inputs	Outputs	Clock	Language
SR3B261BD	24VDC	10 DISCR + 6 (0-10V)	10 RELAY	Yes	Ladder

Reference	Extensions
SR3B261BD	1 Not selected
SR2COM01	2 Not selected

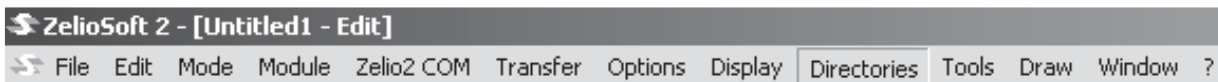
D



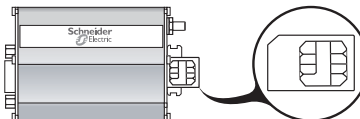
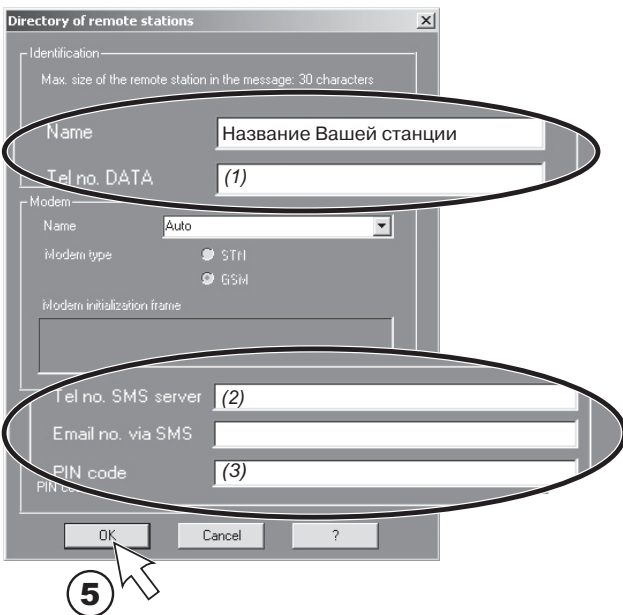
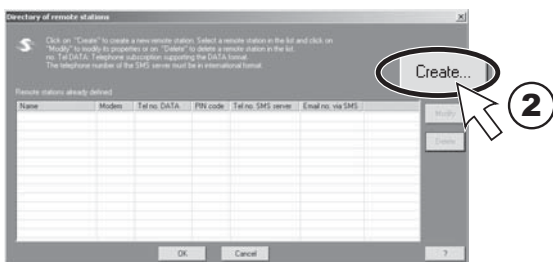
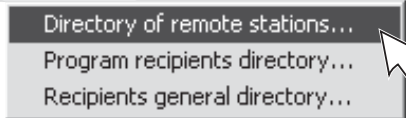
1 Directories: папка адресатов...



E



1 Directories: папка удаленных объектов (станций)...

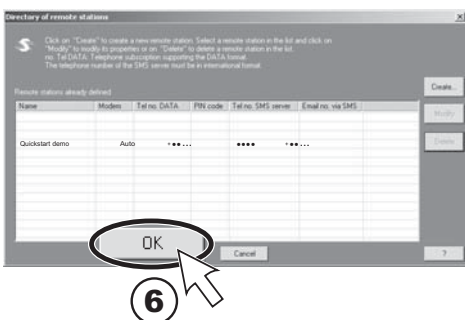


(1) Номер SIM-карты Вашего SR2MOD02 (в международном формате)*

(2) Номер SMS-сервера SIM-карты Вашего SR2MOD02 (в международном формате)*

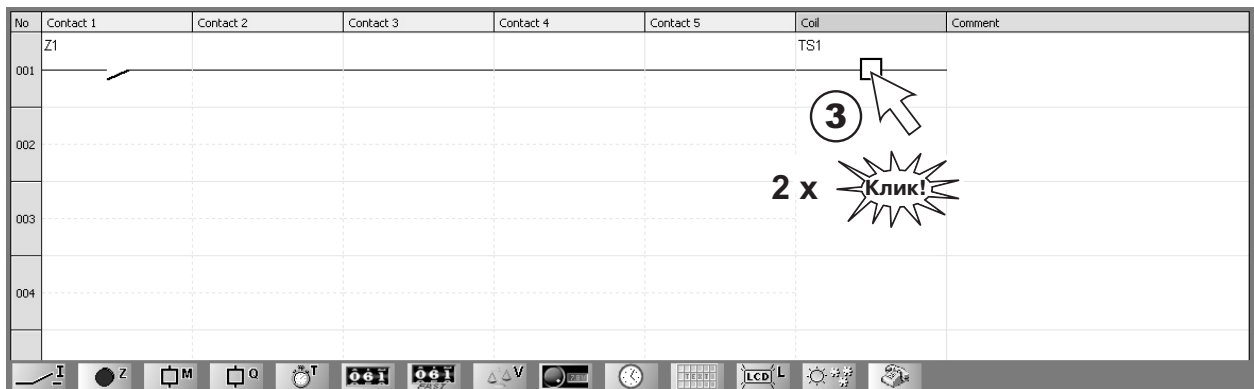
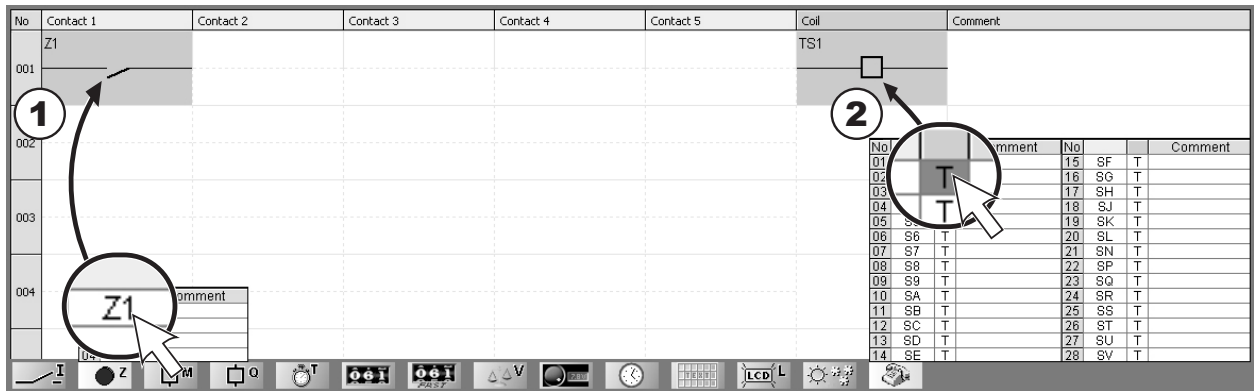
(3) PIN-код SIM-карты Вашего SR2MOD02 (не вводите, если не используется)

* Международный формат: для России +7, далее код оператора и номер телефона



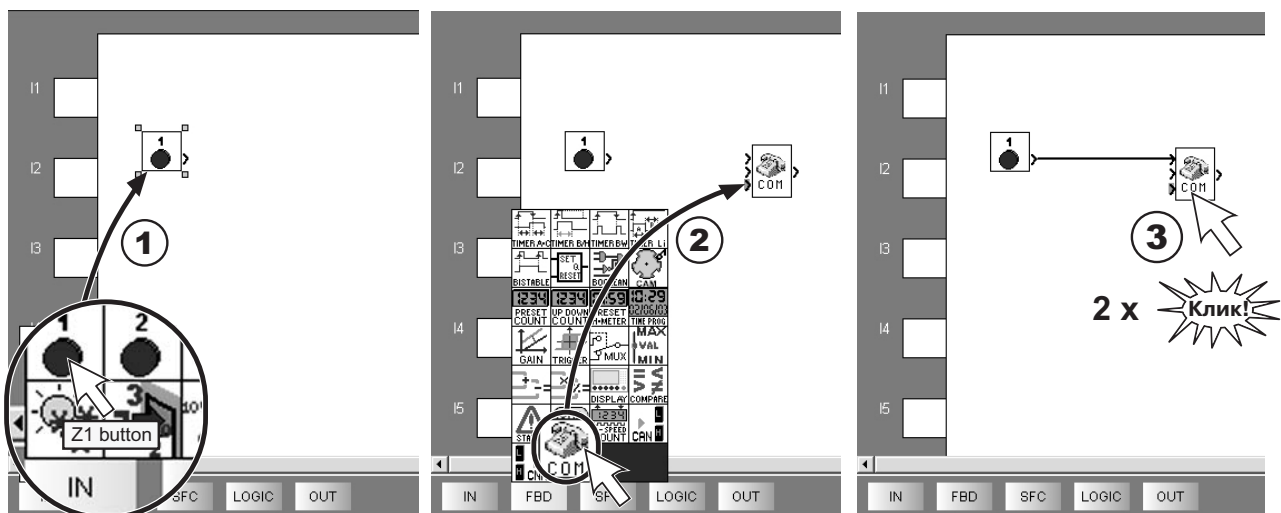
F

LADDER



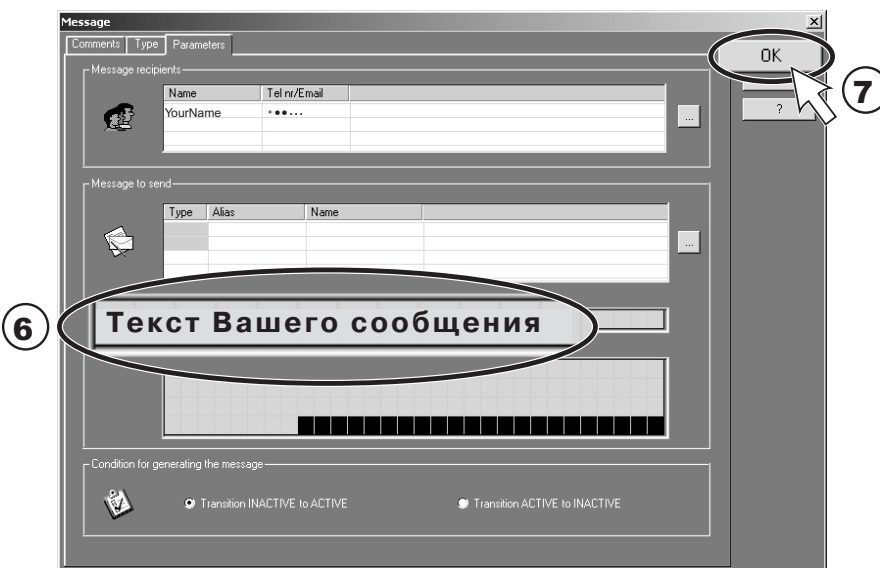
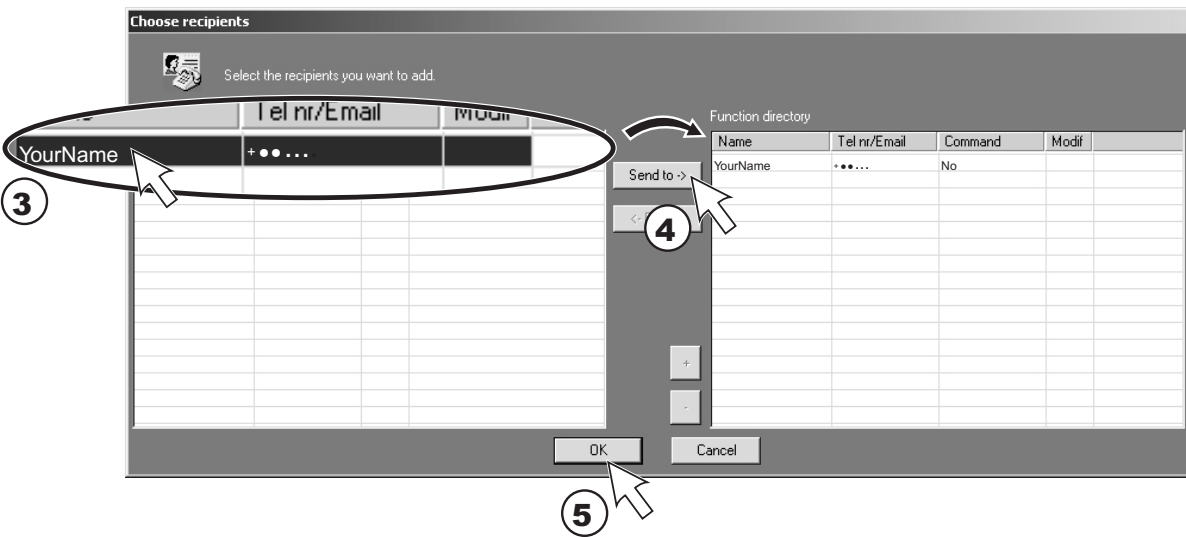
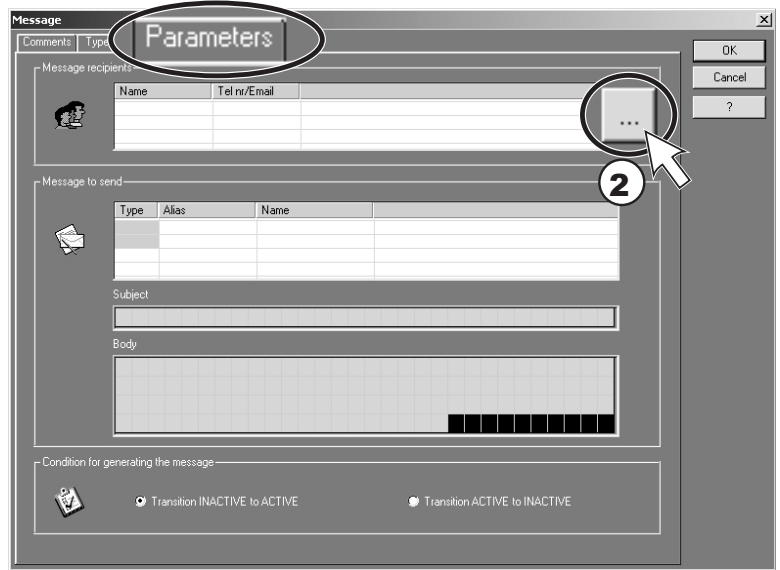
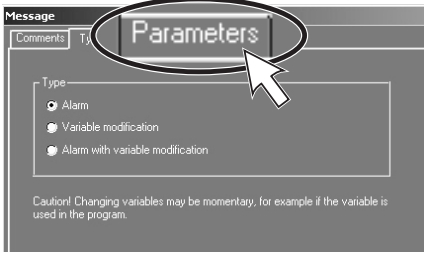
ИЛИ

FBD

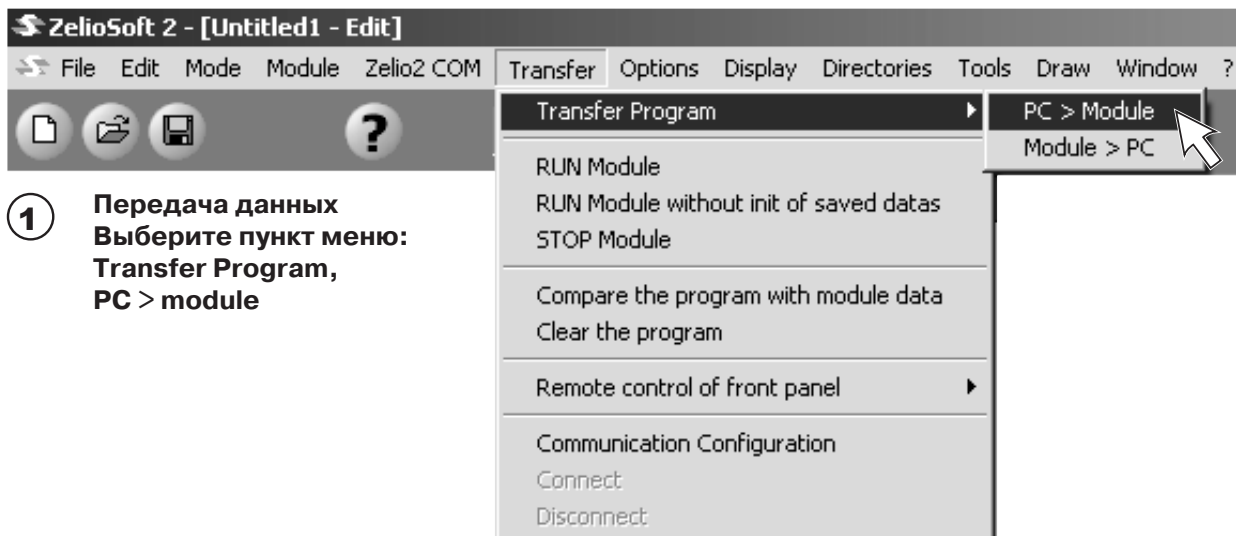


G

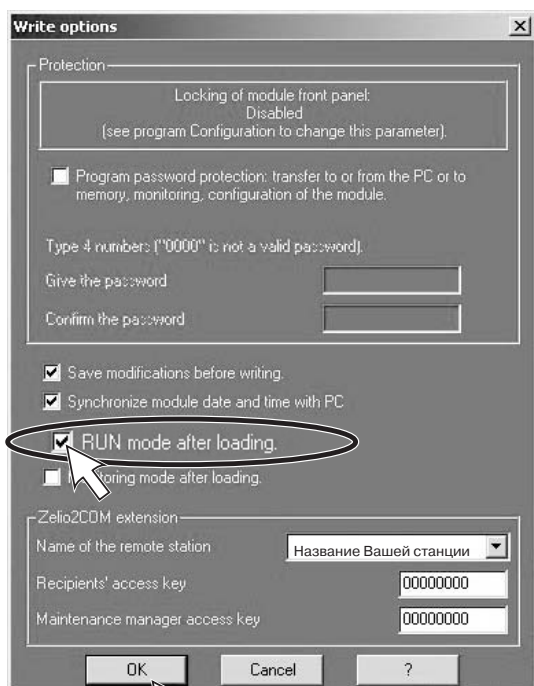
1



H

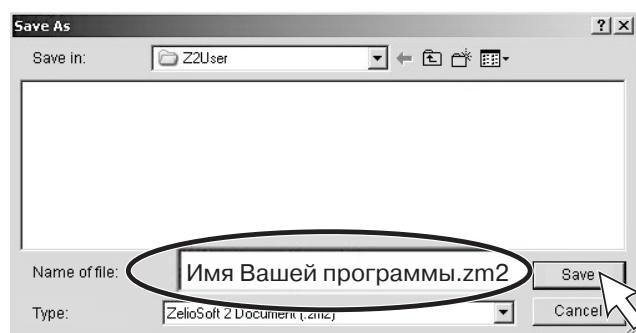


1 Передача данных
Выберите пункт меню:
Transfer Program,
PC > module



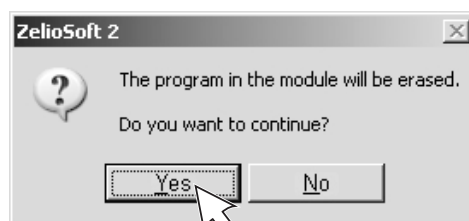
2

3



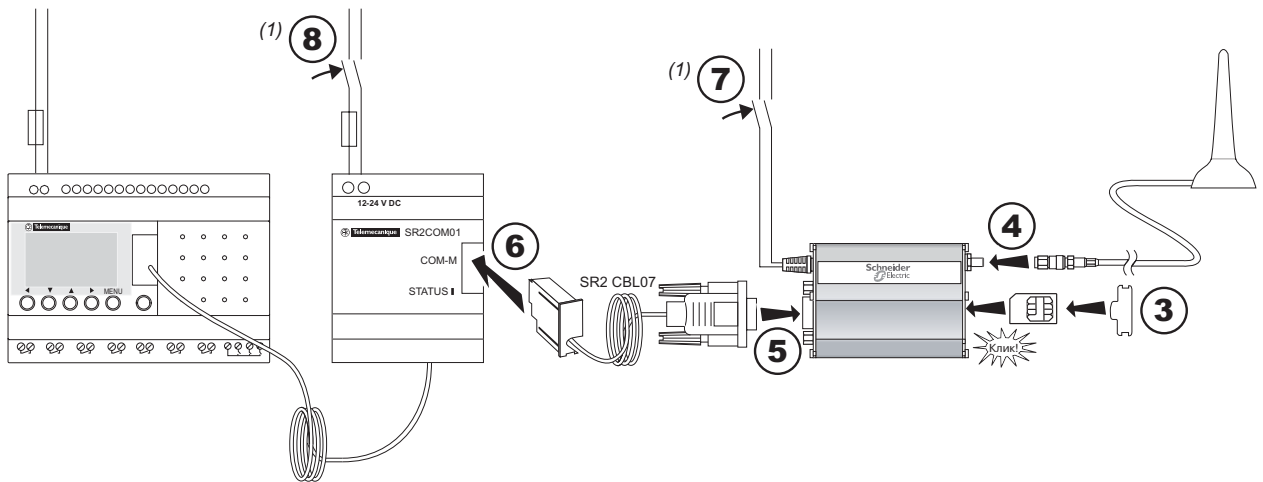
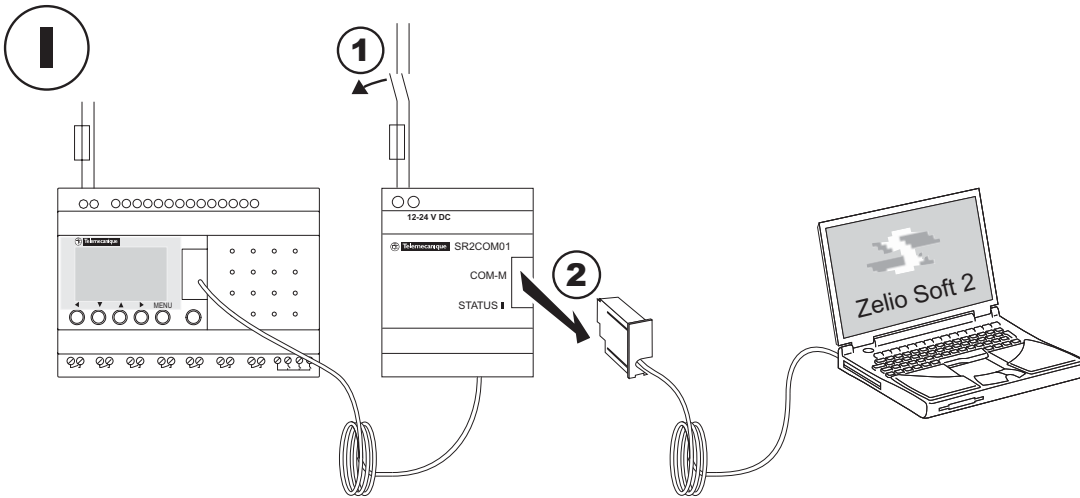
4

5



6

Выполнение передачи



(1) Не включайте SR2COM01 прежде SR2MOD02.

