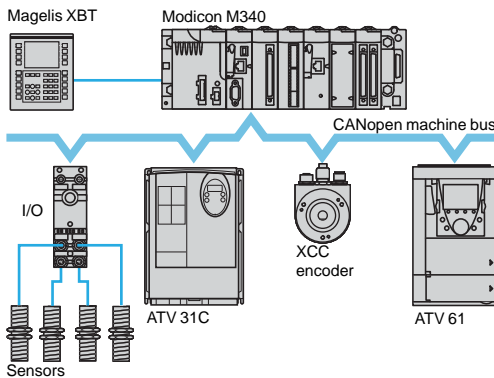
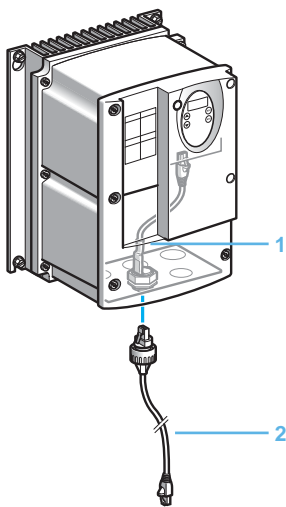


Example of configuration on the Modbus serial link



Example of configuration on CANopen machine bus



RJ45 connection accessories with IP 55 degree of protection

### Presentation

The Altivar 31C drive integrates the Modbus and CANopen communication protocols. Both these protocols can be accessed via the RJ45 communication port which can be located remotely under the enclosure with the IP 55 internal cable (see below).

The Altivar 31C drive can also be connected, via modules that are available as options, to the following industrial communication buses and networks:

- Modbus TCP network
- Fipio bus
- PROFIBUS DP bus
- DeviceNet network

The communication function provides access to the drive's configuration, adjustment, control and monitoring functions.

### Functions

All the functions of the Altivar 31C drive can be accessed via the communication buses and networks:

- Control
- Monitoring
- Adjustment
- Configuration

The speed command and reference may come from the following control sources:

- I/O terminals
- Communication buses and networks
- Remote display terminal

The Altivar 31C drive's advanced functions can be used to manage switching of these drive control sources according to the application requirements.

The communication periodic I/O data assignment can be selected using the network configuration software.

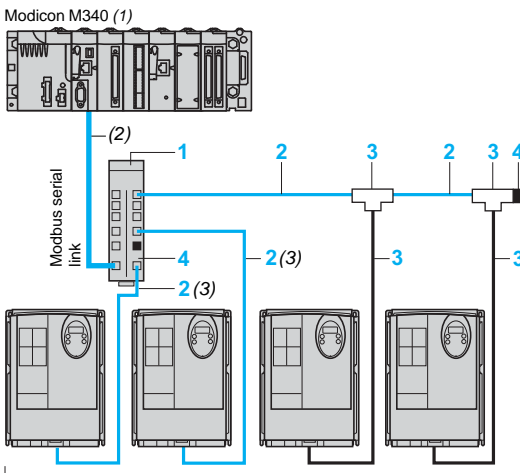
The Altivar 31C drive is controlled using the CiA 402 profile.

Communication is monitored according to criteria specific to each protocol. However, regardless of the protocol, it is possible to configure how the drive responds to a communication fault:

- Freewheel stop, stop on ramp, fast stop or braked stop
- Maintain the last command received
- Fallback position at a predefined speed
- Ignore the fault

### RJ45 connection accessories with IP 55 degree of protection

Description	Item no.	Length m	Reference	Weight kg
<b>Internal IP55 cable for Modbus and CANopen bus</b> equipped with an RJ45 connector and an IP 55 RJ45 base. It can be used to locate the ATV 31C drive's RJ45 port remotely on the underside while maintaining the IP 55 degree of protection. Requires IP 55 external cable VW A0 1501 to ensure the IP 55 protection index is maintained.	1	0.3	VW3 A0 1500	0.050
<b>External IP55 cable for Modbus and CANopen bus</b> equipped with an RJ45 connector and an IP 55 RJ45 connector. It can be used to connect an ATV 31C drive equipped with a VW3 A0 1500 cable to ensure the IP 55 protection index is maintained.	2	3	VW3 A0 1501	0.130

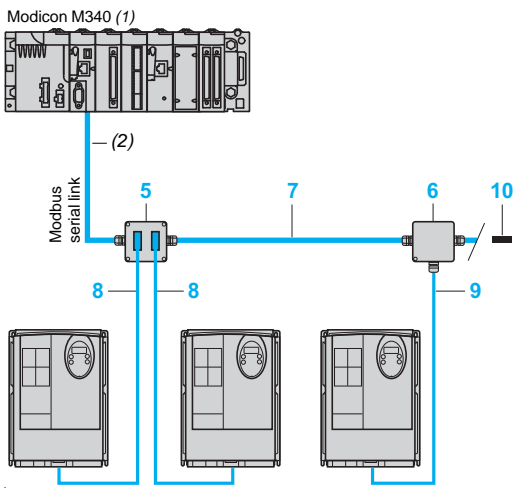


ATV 31C  
Example of Modbus serial link architecture, connections via splitter boxes and RJ45 connectors

#### Modbus serial link

##### Accessories for connection via splitter boxes and RJ45 connectors

Description	Item no.	Length	Unit reference	Weight	
		m		kg	
<b>Modbus splitter box</b> 10 RJ45 connectors and 1 screw terminal block	1	–	LU9 GC3	0.500	
<b>Cables for Modbus serial link</b> equipped with 2 RJ45 connectors	2	0.3	VW3 A8 306 R03	0.025	
	1	–	VW3 A8 306 R10	0.060	
	3	–	VW3 A8 306 R30	0.130	
<b>Modbus T-junction boxes</b> (with integrated cable)	3	0.3	VW3 A8 306 TF03	–	
	1	–	VW3 A8 306 TF10	–	
<b>Modbus line terminator</b> for RJ45 connector (4)	R = 120 Ω, C = 1 nf	4	–	VW3 A8 306 RC	0.200
	R = 150 Ω	4	–	VW3 A8 306 R	0.200



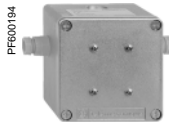
ATV 31C  
Example of Modbus serial link architecture, connections via tap junctions

##### Accessories for connection via tap junctions

Description	Item no.	Length	Unit reference	Weight	
		m		kg	
<b>Modbus subscriber socket</b> 2 x 15-way female SUB-D connectors and 2 screw terminal blocks, RC line terminator To be connected using cable VW3 A8 306	5	–	TSX SCA 62	0.570	
<b>Modbus tap</b> 3 screw terminal blocks, RC line terminator To be connected using cable VW3 A8 306 D30	6	–	TSX SCA 50	0.520	
<b>RS 485 double shielded twisted pair Modbus cables</b> Supplied without connector	7	100	TSX CSA 100	–	
		200	TSX CSA 200	–	
		500	TSX CSA 500	–	
<b>Modbus drop cable</b> 1 RJ45 connector and 1 x 15-way male SUB-D connector for TSX SCA 62	8	3	VW3 A8 306	0.150	
<b>Modbus drop cable</b> 1 RJ45 connector and one stripped end for TSX SCA 50	9	3	VW3 A8 306 D30	0.150	
<b>Modbus line terminator</b> for screw terminal block (4) (5)	R = 120 Ω, C = 1 nf	10	–	VW3 A8 306 DRC	0.200
	R = 150 Ω	10	–	VW3 A8 306 DR	0.200



TSX SCA 62



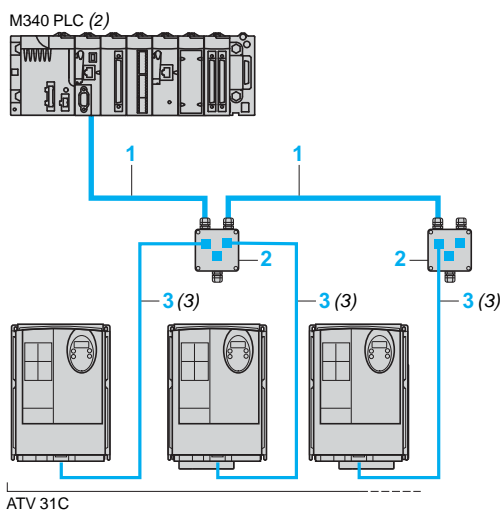
TSX SCA 50

(1) Please refer to the "M340 Automation platform" catalogue.  
 (2) Cable dependent on the type of controller or PLC. Please consult our website "www.schneider-electric.com".  
 (3) Possibility of using the IP 55 external cable for Modbus and CANopen buses VW3 A0 1501 (see page 60447/2)  
 (4) Depends on the bus architecture.  
 (5) Order in multiples of 2.

# Variable speed drives

## Altivar 31C

### Communication buses and networks



ATV 31C

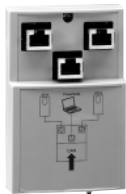
Example of architecture with CANopen machine bus

PF600094



TSX CAN C●●●●

PF600093



VW3 CAN TAP2

### CANopen machine bus

#### Connection cables and accessories (1)

Description	Item no.	Length	Unit	Weight
			reference	
		m		kg
<b>CANopen cable</b>	<b>1</b>	50	<b>TSX CAN CA50</b>	4.930
Standard cable, C€ marking.		100	<b>TSX CAN CA100</b>	8.800
Low smoke emission, halogen-free.		300	<b>TSX CAN CA300</b>	24.560
Flame retardant (IEC 60332-1)				
<b>CANopen cable</b>	<b>1</b>	50	<b>TSX CAN CB50</b>	3.580
Standard cable, UL certification, C€ marking		100	<b>TSX CAN CB100</b>	7.840
Flame retardant (IEC 60332-2)		300	<b>TSX CAN CB300</b>	21.870
<b>CANopen cable</b>	<b>1</b>	50	<b>TSX CAN CD50</b>	3.510
Cable for harsh environments (4) or mobile installations, C€ marking		100	<b>TSX CAN CD100</b>	7.770
Low smoke emission, halogen-free.		300	<b>TSX CAN CD300</b>	21.700
Flame retardant (IEC 60332-1)				
<b>IP20 CANopen junction boxes</b>	<b>2</b>	–	<b>VW3 CAN TAP2</b>	0.480
equipped with:				
■ 2 screw terminal blocks for trunk cable tap link				
■ 2 RJ45 connectors for connecting drives				
■ 1 RJ45 connector for connecting a PC				
<b>Daisy chain tap</b>	–	0.6	<b>TCS CTN026M16M</b>	–
equipped with:				
■ 2 spring terminals for daisy chain connection of the CANopen bus				
■ 1 cable equipped with an RJ45 connector for connecting the drive				
<b>Daisy chain tap</b>	–	0.3	<b>TCS CTN023F13M03</b>	–
equipped with:				
■ 2 RJ45 connectors for daisy chain connection of the CANopen bus				
■ 1 cable equipped with an RJ45 connector for connecting the drive				
<b>CANopen line terminator</b>	–	–	<b>TCS CAR01NM120</b>	–
for screw terminal connector (5)				
<b>CANopen cordsets</b>	<b>3 (3)</b>	0.3	<b>VW3 CAN CARR03</b>	0.050
equipped with 2 RJ45 connectors		1	<b>VW3 CAN CARR1</b>	0.500

(1) For other connection accessories, please refer to the "Industrial communication networks in machines and installations" catalogue.

(2) Please refer to the "M340 Automation platform" catalogue.

(3) Possibility of using the IP 55 external cable for Modbus and CANopen buses VW3 A0 1501 (see page 60447/2)

(4) Standard environment:

- No particular environmental constraints
- Operating temperature between + 5°C and + 60°C
- Fixed installation

Harsh environment:

- Resistance to hydrocarbons, industrial oils, detergents, solder splashes
- Relative humidity up to 100%
- Saline atmosphere
- Operating temperature between - 10°C and + 70°C
- Significant temperature variations

(5) Order in multiples of 2.



TSX ETG 100



LUF P1

#### Other communication buses and networks

Description	Cables to be connected	Reference	Weight kg
<b>Ethernet Modbus gateway/router (1)</b> Class B10 For connection to the Modbus TCP network	VW3 A8 306 D30 (2)	<b>TSX ETG 100</b>	–
<b>Fipio/Modbus gateway (3)</b> For connection to the Fipio bus	VW3 A8 306 R●● (2)	<b>LUF P1</b>	0.245
<b>PROFIBUS DP/Modbus gateway (3)</b> For connection to the PROFIBUS DP bus Parameters set using ABC Configurator software (3)	VW3 A8 306 R●● (2)	<b>LUF P7</b>	0.245
<b>DeviceNet/Modbus gateway (3)</b> For connection to the DeviceNet network	VW3 A8 306 R●● (2)	<b>LUF P9</b>	0.245

(1) Please refer to the "Industrial communication networks in machines and installations" catalogue.

(2) See page 60447/3.

(3) Please refer to the "TeSys U starter-controllers" catalogue.